

how we see exhibition

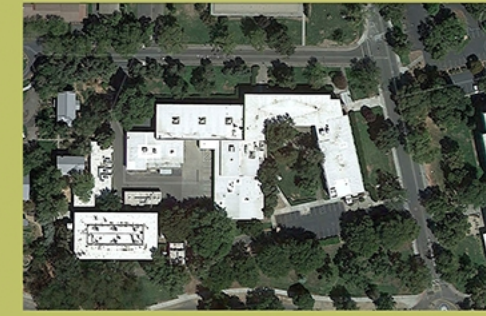
REFRAMING



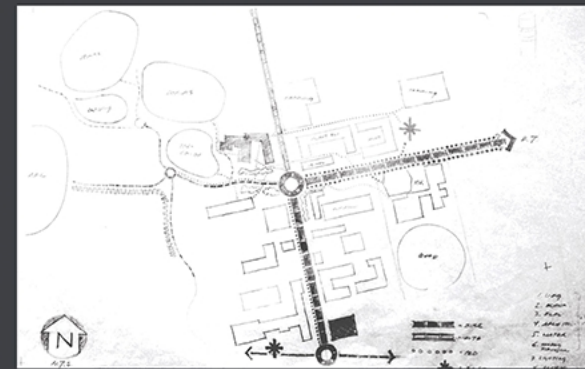
REFRAMING THE BACKGROUND

While we are in the confines of a design school focused on objects, textiles, and experiences, many of the ideas present in ReFrame might resonate with larger scale urban design—especially with landscape urbanism. The landscape architect James Corner described innovative environments as “a constant process of unfolding rather than a rigid reality.” But if industrial design scaled objects can imbue some of these larger ideas, there is a unique efficiency at play, the ambition of which might set off a series of other initiatives that can continue to feed back into even more productive landscapes.

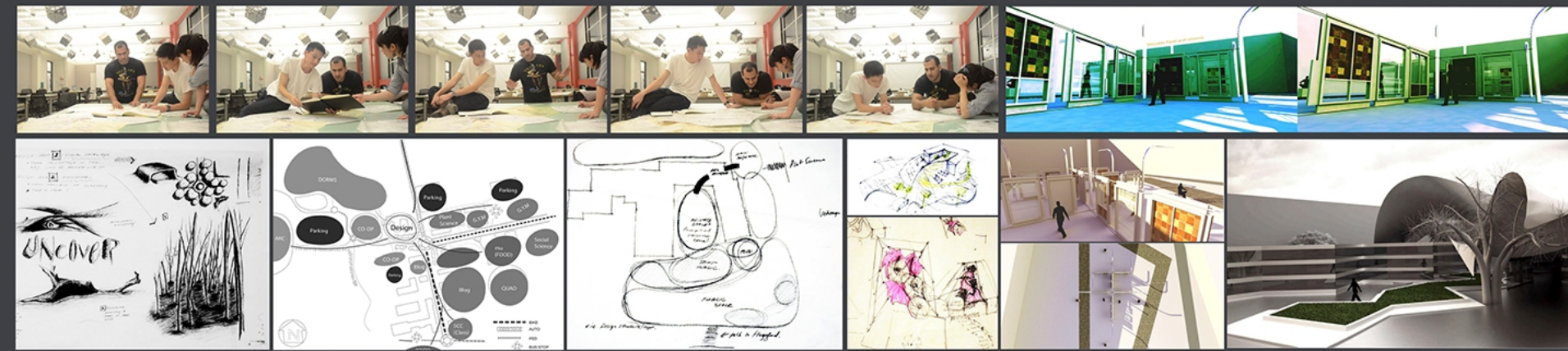
BACKGROUND



Cruess hall in UC Davis California



"Meeting regularly with a group of students from design, landscape, and geography schemes were developed. A particularly biting critique from landscape architect and project advisor Corine Neumann removed excess from the initial schemes and clarified goals. From dozens of conceptual diagrams, many by graduate student Sahoko Yui, one proposal stood out: a series of open-air frames that could be the prototype for diverse projects: an open framework that might allow one material to be tested during a term and later to be replaced with another material. The frames do double duty as shade screens and have the potential to act as landscaping with a rotating cast of inert material. Mahan Soltanzadeh, a first year graduate student, spearheaded the design and developed details."

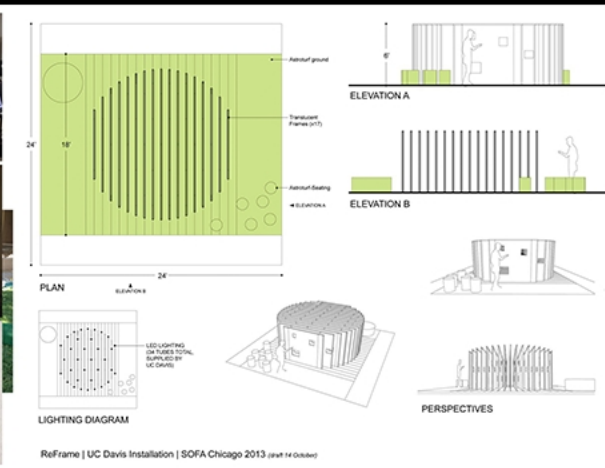
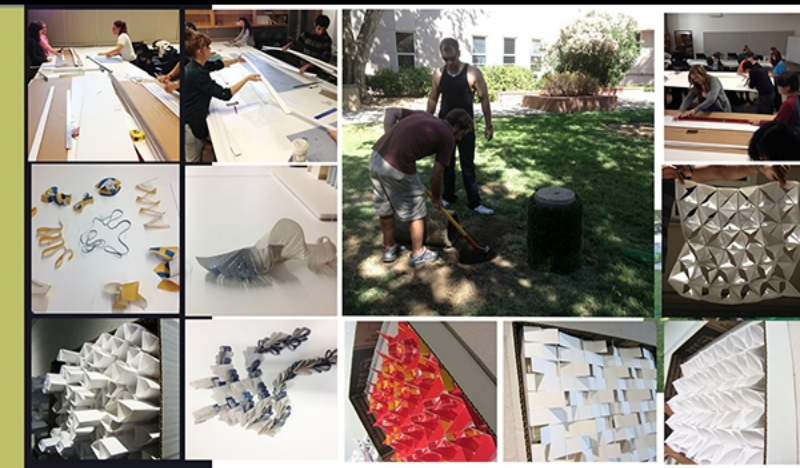


While we are in the confines of a design school focused on objects, textiles, and experiences, many of the ideas present in ReFrame might resonate with larger scale urban design—especially with landscape urbanism. The landscape architect James Corner described innovative environments as “a constant process of unfolding rather than a rigid reality.” But if industrial design scaled objects can imbue some of these larger ideas, there is a unique efficiency at play, the ambition of which might set off a series of other initiatives that can continue to feed back into even more productive landscapes.

We talk about our setting in uc davis and the current situation of the campus.

REFRAMING OUR MATERIAL

rubber vinyl is a waste cycle reframing the way we see our waste information on our materials and how we happened upon them. talk about more things and possibilities and segue into ideas.



With many thanks to the following groups and individuals for their generous contributions to the evolution of the Cruess Courtyard: Angela Yuan, Ann Savageau, The Arboretum, Bob Morgan, Bob Seger, Brodie Hegg, Claire Napawan, Dave Klippert, Jack Leng, Mahan Soltanzadeh, Sahoko Yui, and Tim McNeil