



Melyssa Lee & Amy Ly

DES I58

Winter 2016



# MADMOISELLE PRIVÉ



SAATCHI GALLERY, LONDON  
13<sup>TH</sup> OCTOBER - 1<sup>ST</sup> NOVEMBER 2015

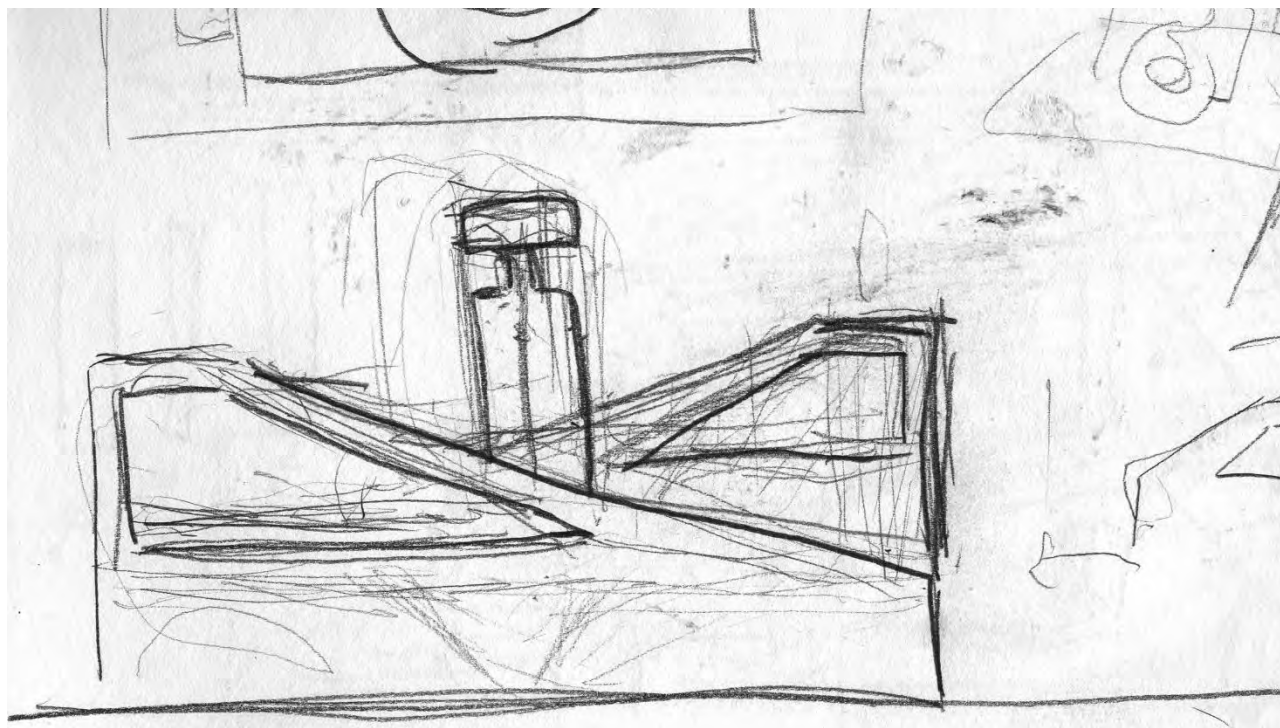
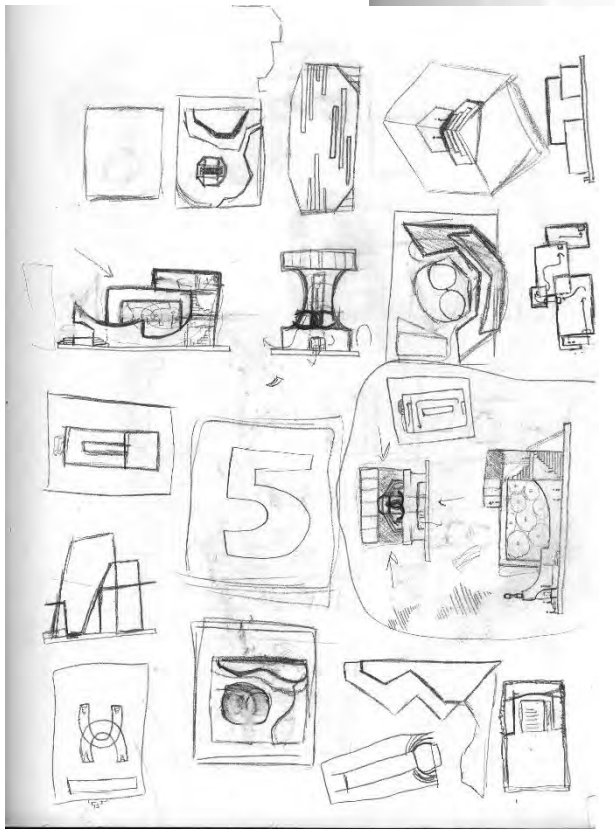
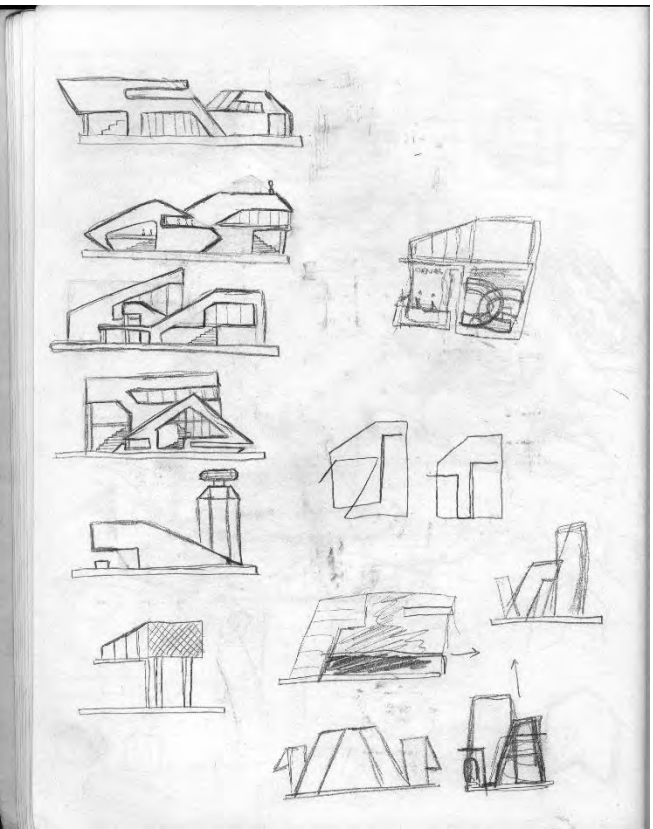
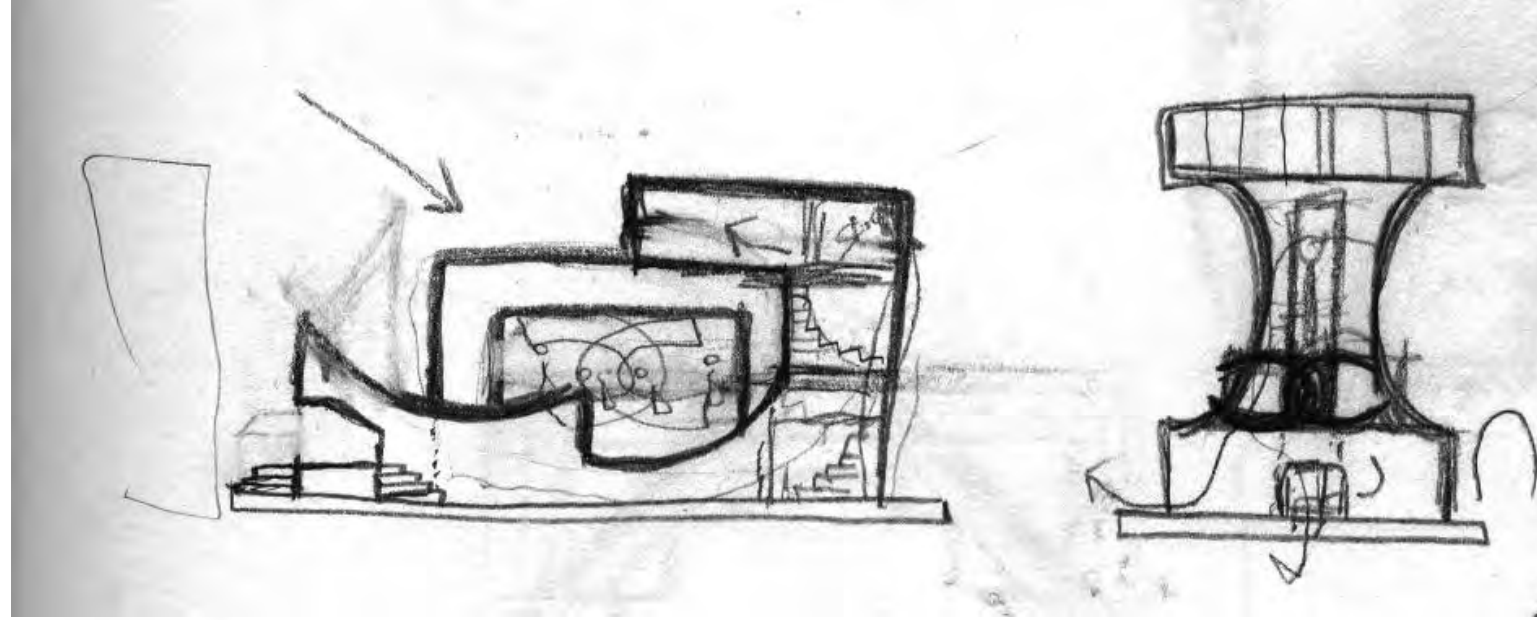
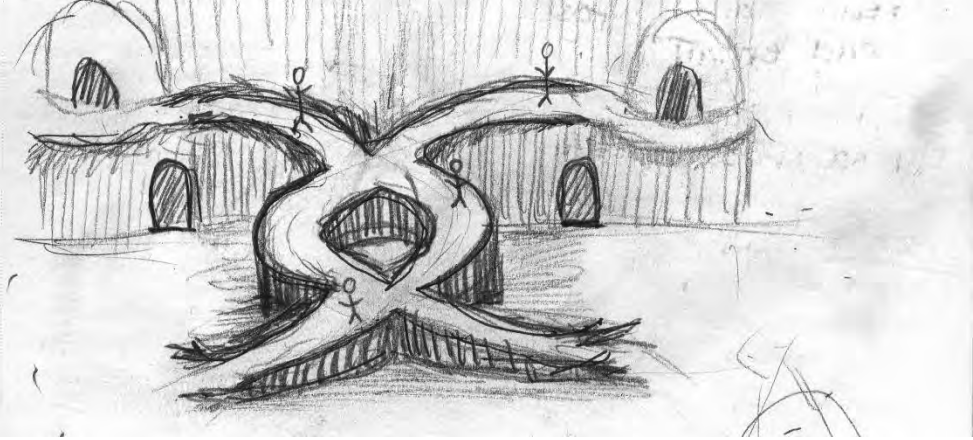
MADMOISELLEPRIVE.CHANEL.COM  
#MADMOISELLEPRIVE

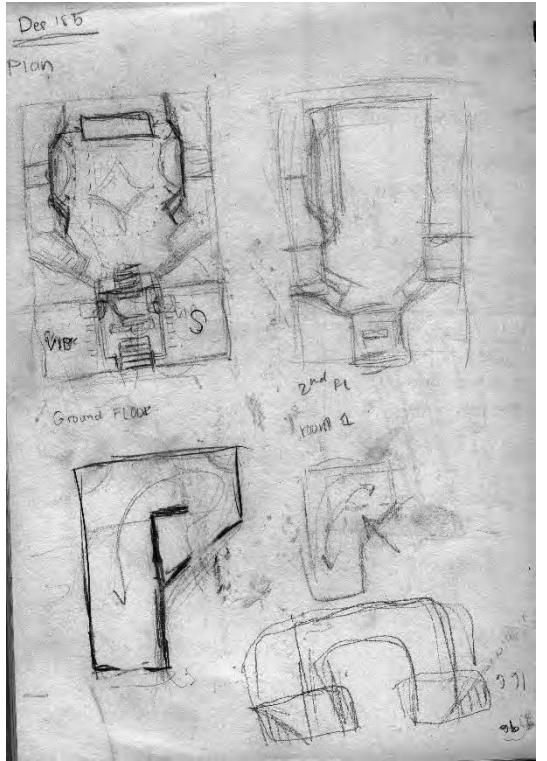
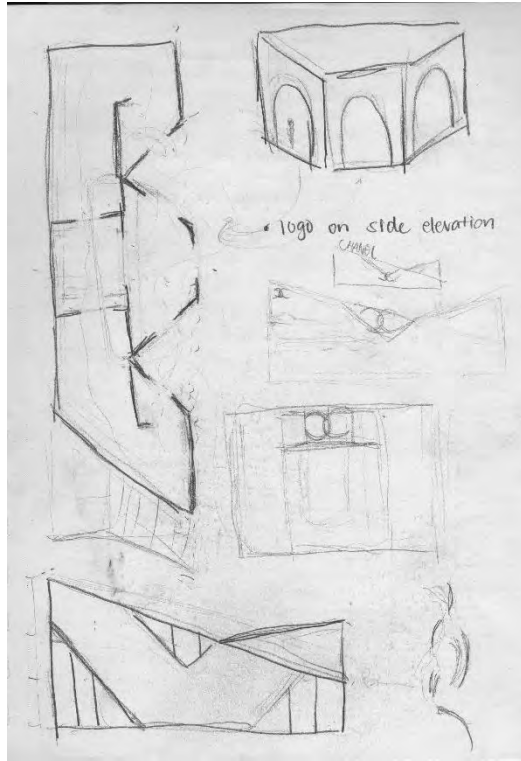
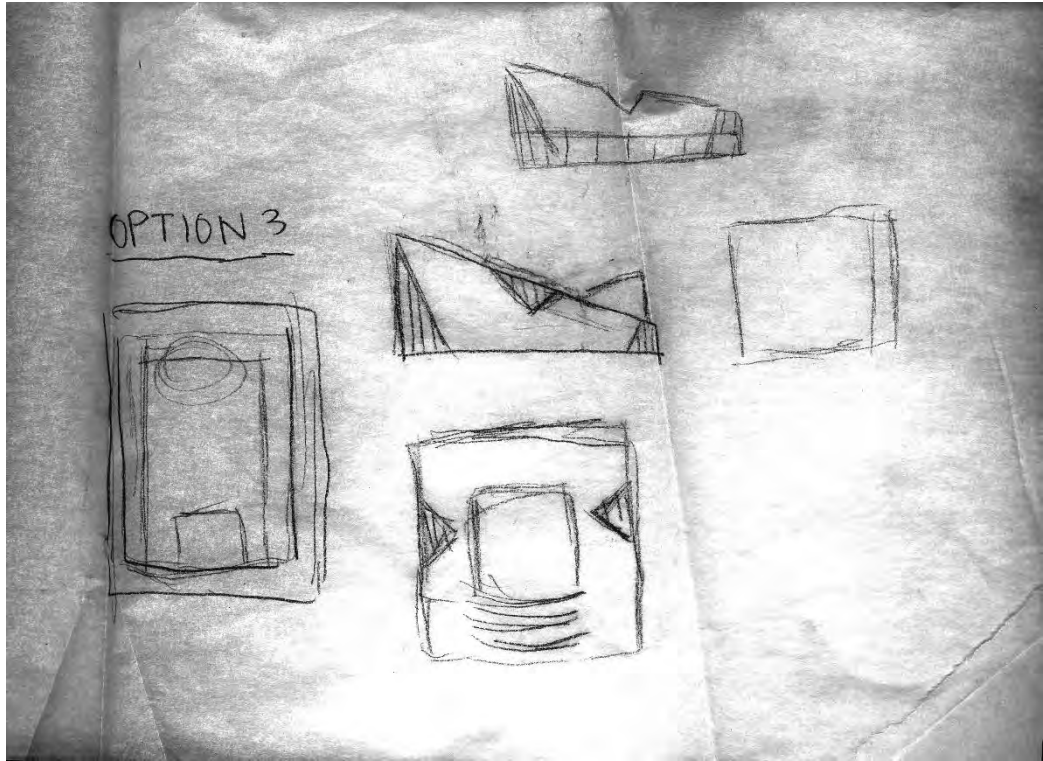
CHANEL

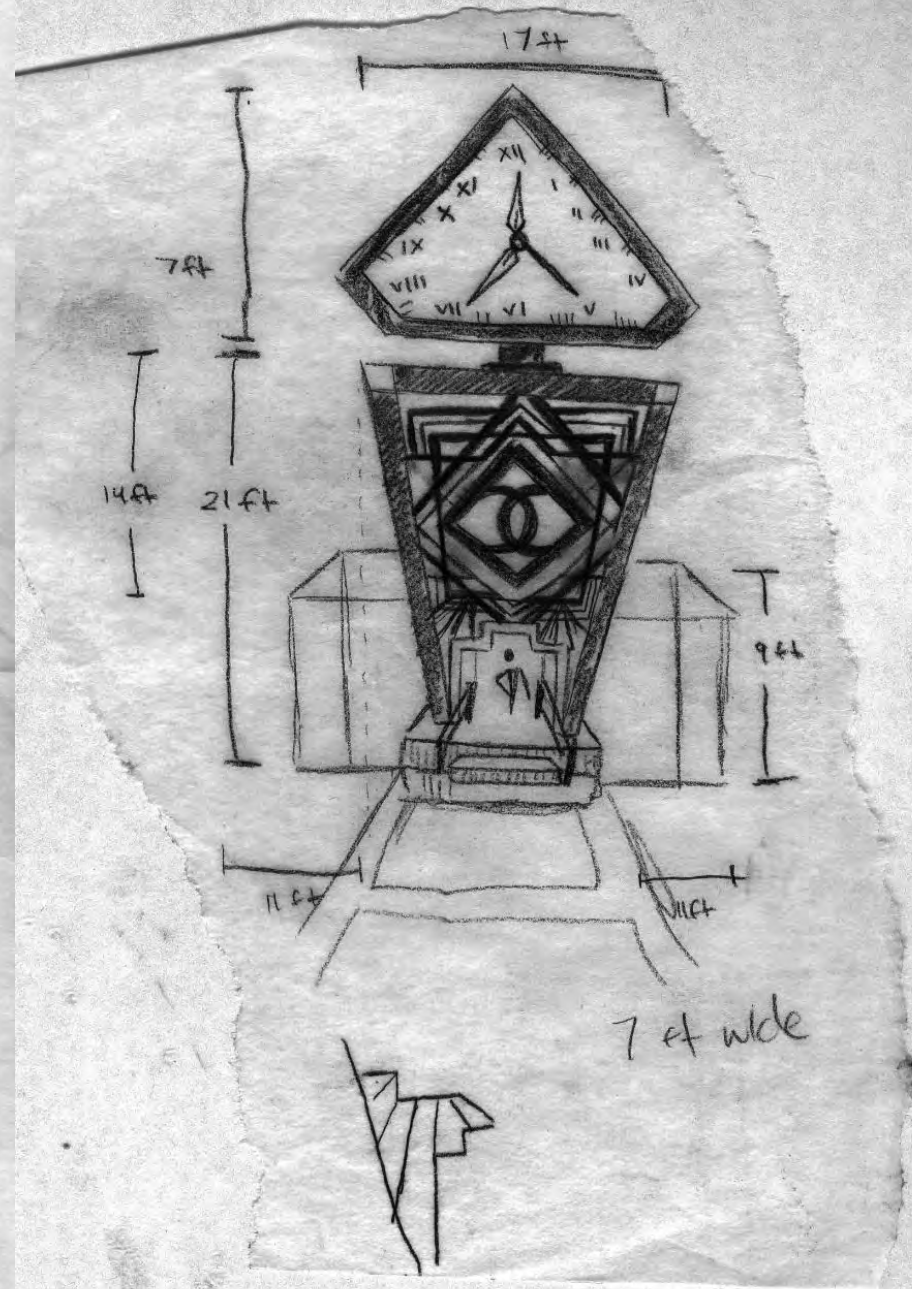
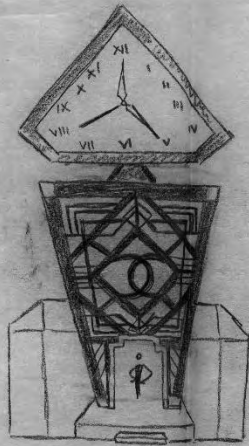
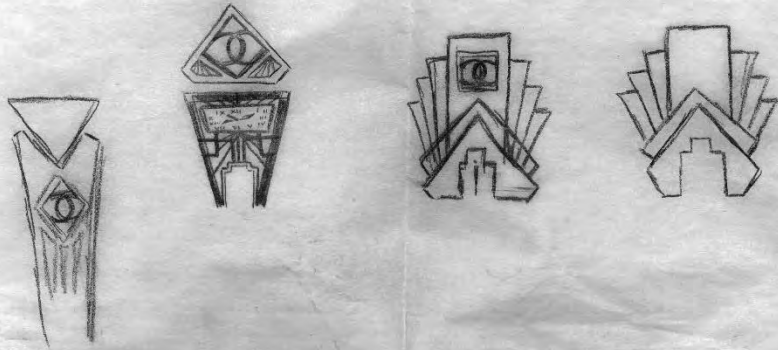
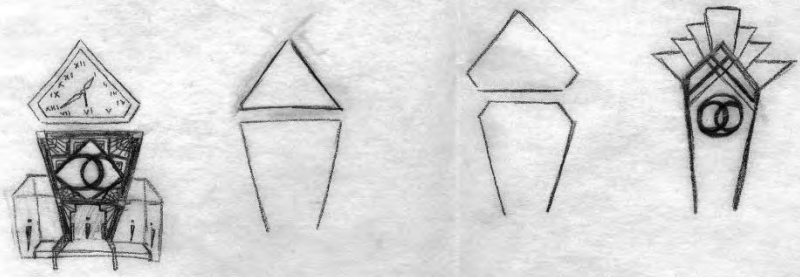


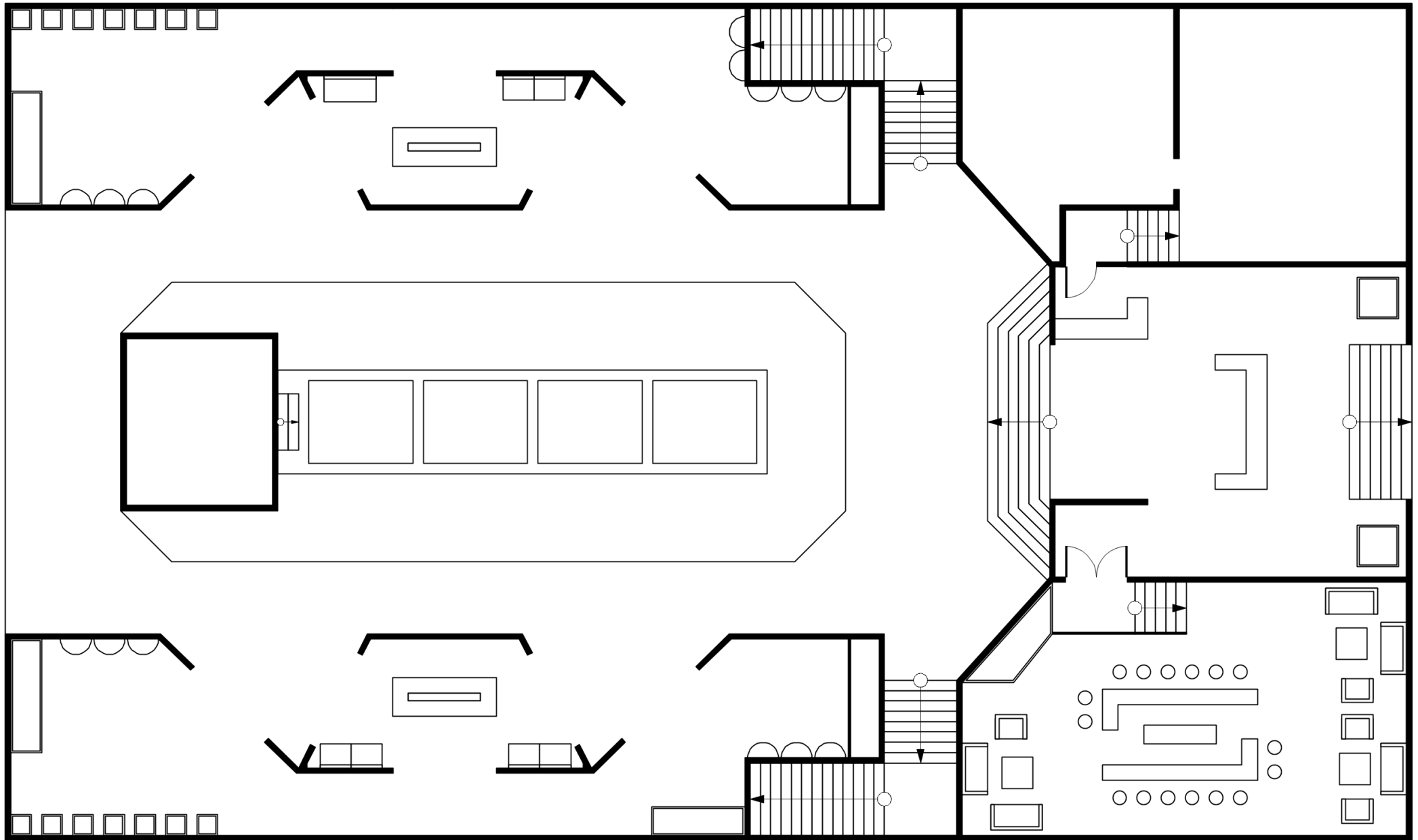
DES 185

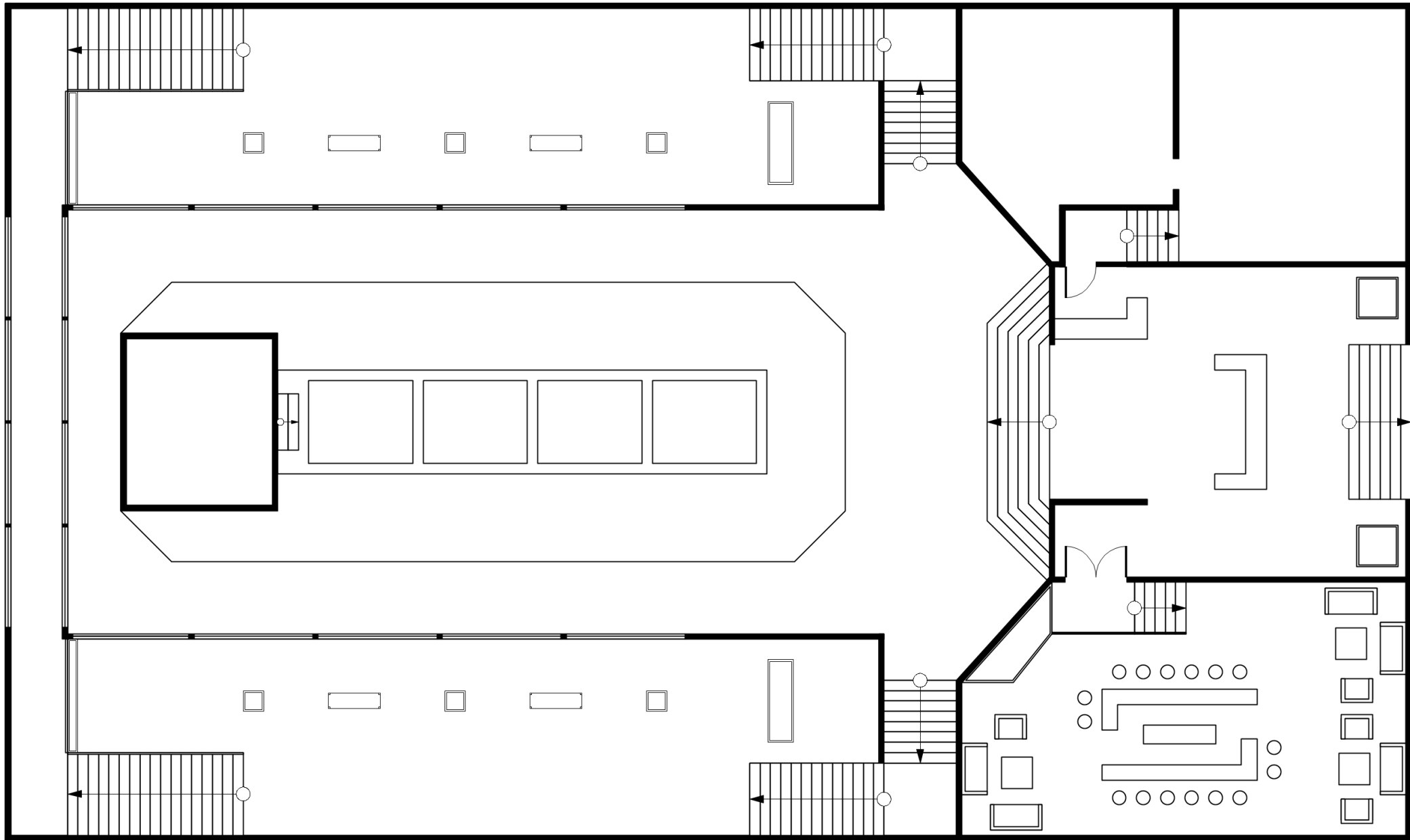
Chanel

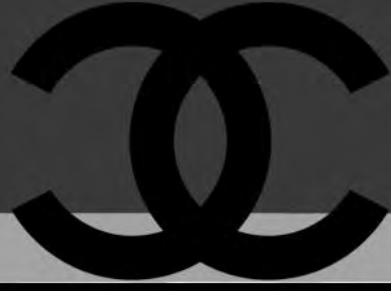






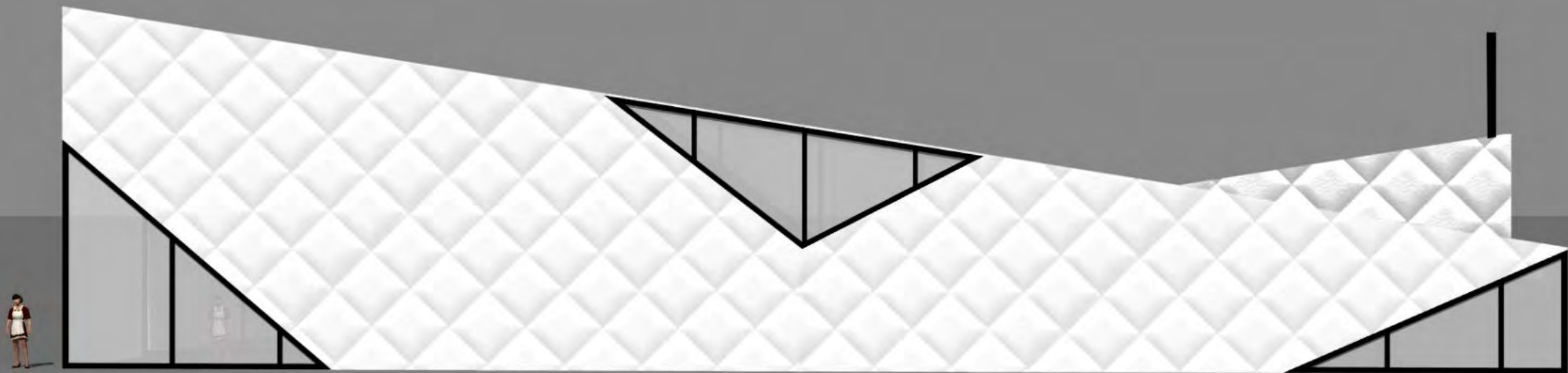






CHANEL





**CHANEL**





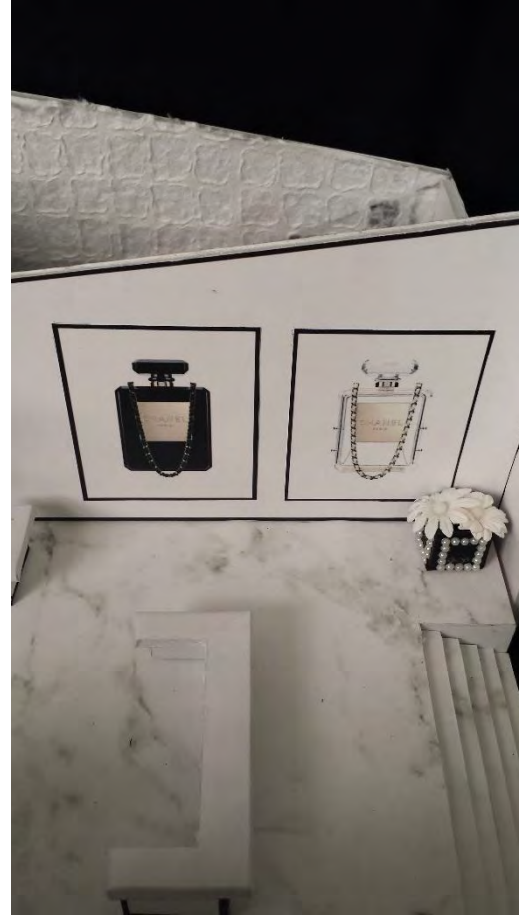
DÉBUT DE CHANEL



PARIS EXPO PORTE DE VERSAILLES  
17TH MARCH - 12TH MAY 2016

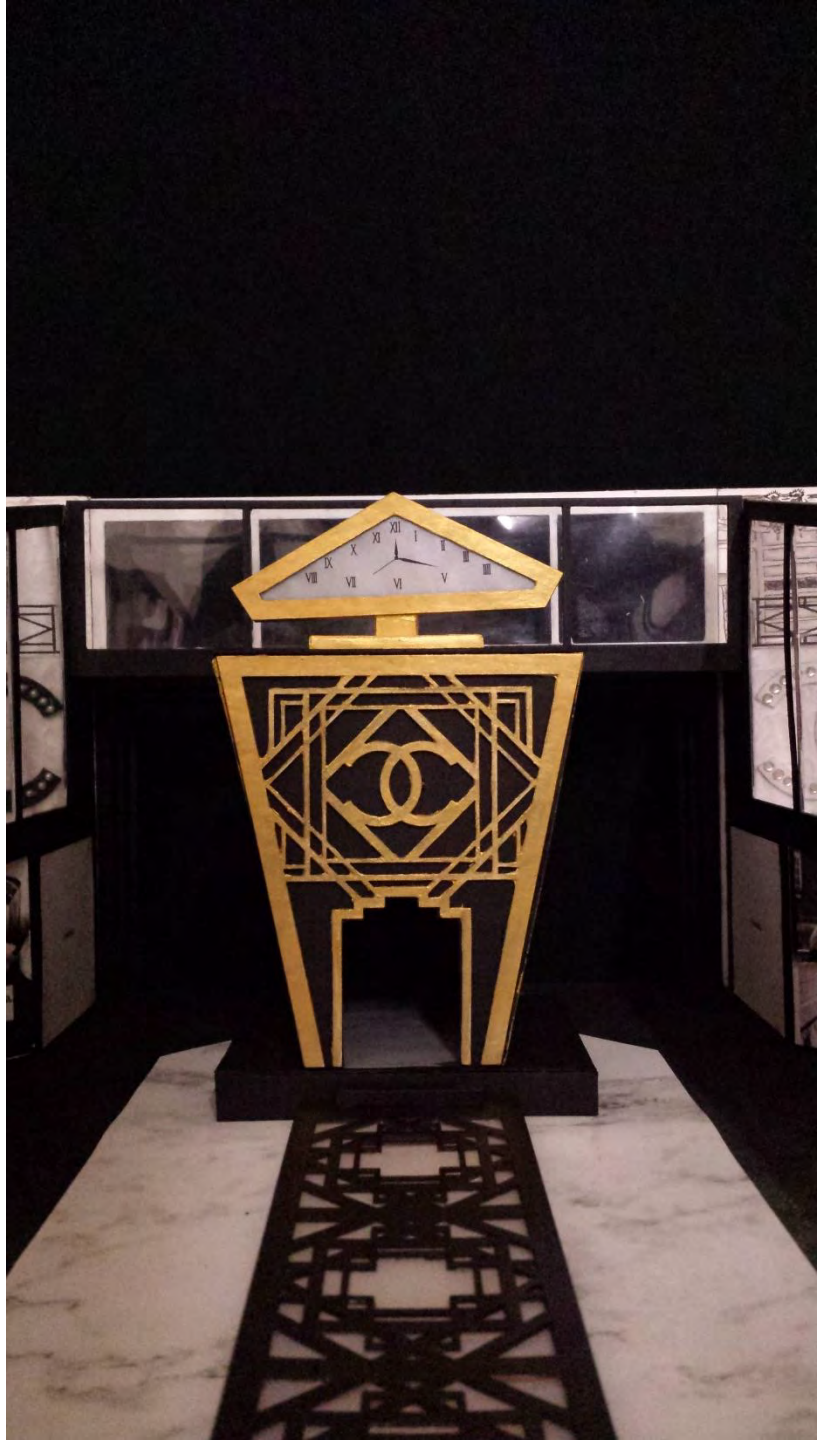






















CHANEL

KONIGS

"Those who create are rare.  
Those who cannot are numerous.  
Therefore, the latter are stronger."

- CoCo Chanel